

Leaflet

pewag winner profilift

PLGW-SN Eye nut

pewag's new PLGW-SN lifting eye nut is the logical continuance to the successful PLGW product portfolio. This product is unsurpassed worldwide due to the main principle being based on tool-free installation. The product is used in those areas where a threaded bolt on the load is used instead of a simple thread. Furthermore, there is a possibility to mount the lifting point PLGW-SN with a commercially available (standard) screw through the clearance hole. The benefit of the PLGW-SN is that no matter the width of the load, the same lifting point can be used – all one needs are standard screws with different screw lengths. For more details, please refer to the instruction manual.

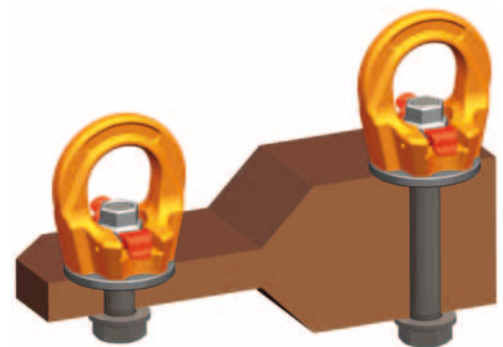
Further benefits of the PLGW-SN lifting points are:

- tools are not necessary for assembling or disassembling
- the time saving aspect especially when frequent (dis)assembling takes place
- rotatable (load direction adjustment)
- in all directions loadable

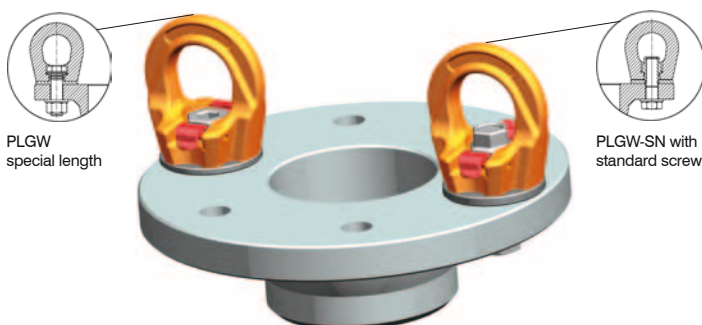
If necessary or desired, this system's nut can also be tightened using a commercially available ring spanner. Every lifting point in the PLGW-SN series is labelled with the permitted load carrying capacity, the thread size and an individual serial number. The operating instructions delivered with the product contain general advice as well as a table with the permitted carrying capacity according to the type, number of chain legs and inclination angle. This new lifting point has been designed, manufactured and certified by pewag according to the latest industry standards and norms (MSV 2010, MD 2006/42/EG, BGR 500, EN 1677 etc.).



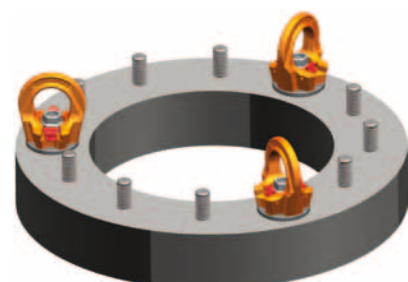
PLGW-SN Eye nut



Application 2: Differing load thickness/width



Application 1: Employment PLGW or PLGW-SN



Application 3: Available Threaded Bolts